

## CONTENTS

Toolkit Release Notes.....	1
Contents .....	1
Toolkit 1.12.4 Release Notes .....	2
Important Note .....	2
What's New .....	2
Toolkit 1.12.3 Release Notes .....	3
Important Note .....	3
What's New .....	3
Toolkit 1.12.2 Release Notes .....	4
Important Note .....	4
What's New .....	4
New Units .....	4
Private Java Runtime Environment .....	4
C-Gate Launcher Modifications .....	4
Change Log .....	5
Toolkit 1.12.2.....	5
C-Gate 2.9.2.....	5
Toolkit 1.12.0 Release Notes .....	6
Important Note .....	6
What's New .....	6
Background Network Scan .....	6
Duplicate Detection.....	7
Refresh Network .....	8
Unravel Improvements.....	8
Applications Panel .....	9
Copy & Paste .....	9
Unit Templates .....	10
Smarter Shutdown .....	10
Concurrent Use of Clipsal Software Applications .....	11
C-Gate Configuration Options .....	11
C-Gate Service .....	12
Did You Know..? .....	13
Automatically Open Projects.....	13
Copy Comma Separated Values .....	13
REPORT A PROBLEM.....	13
Hide Buttons and Columns .....	14
Desynchronise View Filters .....	14
Change Log .....	15
Toolkit 1.12.0.....	15
C-Gate 2.9.0.....	17

# Toolkit 1.12.4 Release Notes

November 2012

## IMPORTANT NOTE

When C-Bus Toolkit 1.12.4 prompts you to back up your projects please keep the backups in a safe place. You will need them if you wish to return to C-Bus Toolkit version 1.11.x or earlier.

## WHAT'S NEW

- Fixed an Exception when using Custom Font or Image for labels in DLT units.
- Fixed a bug that was stopping users from using Reinstall Unit feature.

# Toolkit 1.12.3 Release Notes

October 2012

## IMPORTANT NOTE

When C-Bus Toolkit 1.12.3 prompts you to back up your projects please keep the backups in a safe place. You will need them if you wish to return to C-Bus Toolkit version 1.11.x or earlier.

## WHAT'S NEW

- Fixed a critical bug where in some circumstances C-Gate will close and lose connection after 2 minutes of operation.

# Toolkit 1.12.2 Release Notes

October 2012

## IMPORTANT NOTE

When C-Bus Toolkit 1.12.2 prompts you to back up your projects please keep the backups in a safe place. You will need them if you wish to return to C-Bus Toolkit version 1.11.x or earlier.

## WHAT'S NEW

- Support for new units
- Private Java Runtime Environment
- C-Gate Launcher Modifications

---

## NEW UNITS

- C-Bus Digital Temperature Sensor Input Unit (Catalog Number 5104DTSI)

---

## PRIVATE JAVA RUNTIME ENVIRONMENT

As of Toolkit 1.12.2, the installer no longer installs Java on your machine.

Instead, it deploys a private Java Runtime Environment (JRE) which can be found in the `/jre` subdirectory of C-Gate.

C-Gate is the only software that will use this private JRE. It will not write entries in the registry, it will not install a system tray icon, it will not prompt you for updates and it will not conflict with any System JRE already installed on your machine.

If you have a System JRE on your machine that was installed by Toolkit 1.12.1 or earlier and you are certain you have no other software using it, then after installing Toolkit 1.12.2 you can safely choose to uninstall that System JRE by navigating to *Start > Settings > Control Panel > Add or Remove Programs*.

---

## C-GATE LAUNCHER MODIFICATIONS

In the C-Gate directory is an executable launcher, `cgate.exe` that has had several modifications:

1. Previously this launcher would start C-Gate in a console window.

As of C-Gate 2.9.2, the launcher will start the C-Gate Service if it is installed and not presently disabled, otherwise it will start C-Gate in a console window. Consequently this will also be the new behaviour when Toolkit and other products execute the C-Gate launcher.

2. The Windows Start menu now has a new option: *Start > Programs > Clipsal > C-Gate > Restart C-Gate*.

This forces a shutdown of any running C-Gate instance and starts a fresh instance. It works in both Service and Console modes of operation. Note: it will not work if used within 60 seconds of the last start of C-Gate.

3. These and other features of the C-Gate launcher can be controlled via command-line parameters:

<code>cgate.exe</code>	Starts C-Gate Service if installed and enabled, otherwise starts in a Console window
<code>cgate.exe --console</code>	Launches C-Gate in a Console window even if it is installed as a Service.
<code>cgate.exe --start</code>	Starts the C-Gate Service.
<code>cgate.exe --stop</code>	Stops the C-Gate Service.
<code>cgate.exe --restart</code>	Shuts down any running C-Gate Console or Service and starts C-Gate again.

4. The C-Gate launcher now logs extensively to the Windows Event Log. Please consult the Event Viewer (*Start > Run > eventvwr.exe*) if you are having problems with the C-Gate launcher or Service.

## CHANGE LOG

### TOOLKIT 1.12.2

Support for C-Bus Digital Temperature Sensor Input Unit  
Exception when using 'Find C-Bus Networks' feature.  
Exception programming Multi-Room Audio unit.  
Exception programming Thermostat unit.  
Incorrectly saving Dali Gateway '2 way communication' parameter.  
Bugs with Project Tree selection  
Scan Network being slow and unreliable for some users.  
Stability issues with opening very busy Networks.

### C-GATE 2.9.2

0016736 [Cgate.exe and Service] Capture stderr and stdout messages  
0017462 [Events] StringIndexOutOfBoundsException on Air Conditioning messages  
0018548 [General] No / in front of 05C00086000046726564x cause Exception in thread "CbusReceiver" java.lang.String  
0018932 [Database] PROJECT SAVE fails following a FILE DOWNLOAD  
0021346 [General] Expose Enable Control group level  
0021749 [Installer] C-Gate is not launching (Win7 64 bit)  
0021752 [Installer] Use a standalone Java installation  
0021807 [Cgate.exe and Service] Read min/max memory values from c-gate ini file  
0021991 [Communications] Unrouted responses are accepted by the wrong command  
0022023 [Network Unravel] C-Gate reporting duplicate unit incorrectly  
0022361 [Cgate.exe and Service] Try to restart the Service if Startup Type is "Automatic"  
0022960 [Network Sync] Handle old units when the EEPROM wears out  
0022973 [Help (External)] Help for commands CONFIG OBGET and CONFIG OBSET  
0023592 [Libraries] Serial libraries do not work on AMD 64-bit system with 64-bit Java  
0023651 [Project Upgrade process] Fails to upgrade a project with Cyrillic characters  
0023676 [Project Upgrade process] Project files cannot be upgraded and Unicode characters cannot be displayed correctly  
0023882 [Cgate.exe and Service] Add support for local Java directory  
0023884 [Help (External)] Document min/max memory values in c-gate ini file  
0023958 [Commands] Customer reports DBGET is not returning a single property for groups  
0023993 [General Exceptions] Exception in thread CbusReceiver StringIndexOutOfBoundsException with very busy network  
0024005 [Cgate.exe and Service] Ability to force a restart of C-Gate  
0024019 [Log] Misleading references to "Unravel" in log during a Sync  
0024054 [Help (External)] Incorrect information regarding level 9 logs  
0024080 [Installer] Add a Start Menu entry to restart C-Gate  
0024198 [Network Sync] Network scan of a large network fails on the first attempt in Windows 7  
0024234 [Communications] Scans are 30-60% slower with CNI2 (solution is to not use local-flow-control for CNI)  
0024248 [Communications] CBus response is accepted by a wrong command (found in CGate scan log)  
0024277 [Installer] Update 'local-flow-control' to no in the old C-GateConfig.txt in the installer

## IMPORTANT NOTE

This release of Toolkit is a "synchronised" release. This means if you use other Clipsal applications that require C-Gate Server, you must update them too. These applications are PICED, Schedule Plus, Home Gate, OPC Server, Marpa, Tica and Circa.

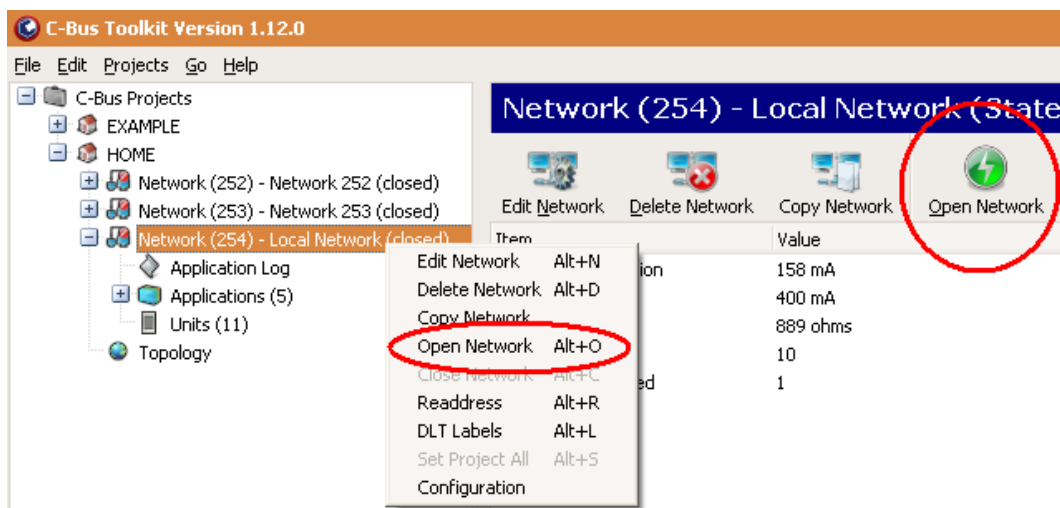
When C-Bus Toolkit 1.12.0 prompts you to back up your projects please keep the backups in a safe place. You will need them if you wish to return to an earlier version of C-Bus Toolkit.

## WHAT'S NEW

- Background Network Scan
- Duplicate Detection
- Refresh Network
- Unravel Improvements
- Applications Panel
- Copy & Paste
- Unit Templates
- Smarter Shutdown
- Concurrent Use of Clipsal Software Applications
- C-Gate Configuration Options
- C-Gate Service

## BACKGROUND NETWORK SCAN

Opening a network in Toolkit now causes a scan of that network to begin in the background.



When you visit the Units node the scan is already in progress. Unit information will start to appear dynamically.

Unit Type	Serial No.	Address	Part Name
PC_LOCAL - DIN Rail PC Interface	000691020014	002	PCI
KEY1 - 1 Gang Key Input Unit	000689280124	003	PANTRY
CBUSUNIT	No serial #	004	
CBUSUNIT		005	
CBUSUNIT		006	
CBUSUNIT		007	
CBUSUNIT		009	
KEYIR4 - 4 Gang and 4 Channel Infrar...	000673150030	021	GARAGEIR
CBUSUNIT		240	

You can initiate some actions such as editing units without waiting for the scan to finish. Other actions will be disabled until the scan is finished, however you can stop the scan at any time to access these actions.

The screenshot shows a software window titled "Units on Network (10) - Summary". At the top, there is a toolbar with icons for "Stop scan", "Edit Unit", "Readdress", "Add/Transfer to DB", "Unravel", "Ping", and "Make Network". Below the toolbar is a table with columns: Unit Type, Serial No., Address, Part Name, and Exists in Database. One row is highlighted in red, and a context menu is open over it, listing actions: "Stop scan" (F5), "Refresh Network" (Ctrl+F5), "Edit Unit" (Alt+N), "Readdress Network Unit" (Alt+A), and "Readdress to Match Database".

Unit Type	Serial No.	Address	Part Name	Exists in Database
CBUSUNIT	000691020014	002	PCI	
CBUSUNIT	000689280124			
CBUSUNIT	No serial #			
CBUSUNIT	000684260048			
CBUSUNIT	000689930003			
CBUSUNIT	000692600009			
CBUSUNIT	No serial #			
CBUSUNIT	000673150030			

## DUPLICATE DETECTION

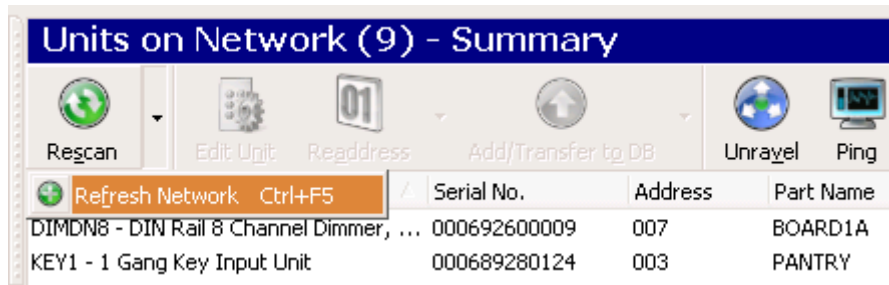
The scan will highlight addresses containing duplicate units. This allows you to work with other units immediately while still having a visible reminder to perform an unravel at a later time.

The screenshot shows a software window titled "Units on Network (8) - Summary". At the top, there is a toolbar with icons for "Regcan", "Edit Unit", "Readdress", "Add/Transfer to DB", "Unravel", "Ping", and "Make Network". Below the toolbar is a table with columns: Unit Type, Serial No., Address, Part Name, Exists in Database, and Prim Application. One row is highlighted in yellow, indicating a duplicate unit.

Unit Type	Serial No.	Address	Part Name	Exists in Database	Prim Application
BRIDGE2N - DIN Rail Network Bridge (...)	001004500307	253	BRIDGE	Yes	All Applications
DIMDN8 - DIN Rail 8 Channel Dimmer, ...	000692600009	007	BOARD1A	Yes	Unused
DUPLICATE	N/A	004	N/A	N/A	N/A
KEY1 - 1 Gang Key Input Unit	000689280124	003	PANTRY	Yes	Lighting
KEY4 - 4 Gang Key Input Unit	000689930003	006	KEY4	Yes	Lighting
KEYSCEN4 - 4 Gang Scene Controller	No serial #	009	THEATRE	Unit Type Only - Se...	Lighting
PC_LOCAL - DIN Rail PC Interface	000691020014	002	PCI	Yes	N/A
RELDN12 - DIN Rail 12 Channel Voltag...	000687420214	240	BOARD1B	Yes	Lighting

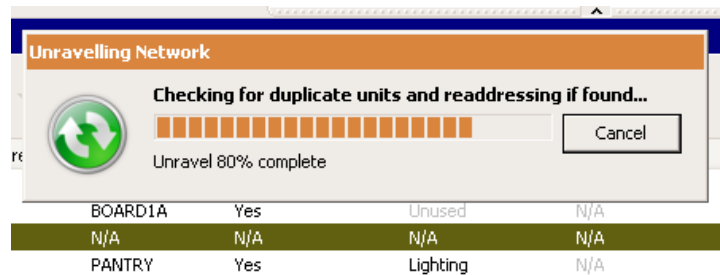
## REFRESH NETWORK

This is the feature formerly known as *Scan New*. In addition to finding newly added units, this feature now detects any duplicate unit scenarios that manifested since the last scan.

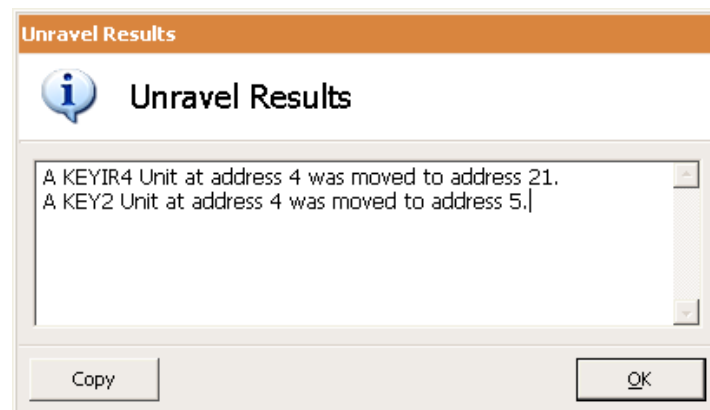


## UNRAVEL IMPROVEMENTS

The unravel process is now more reliable especially with large networks. You may initiate an unravel of either the entire network or a single address. Where possible, units will be unravelled to match the equivalent address in the database.



Upon completion of the unravel a summary of unit movements is shown.



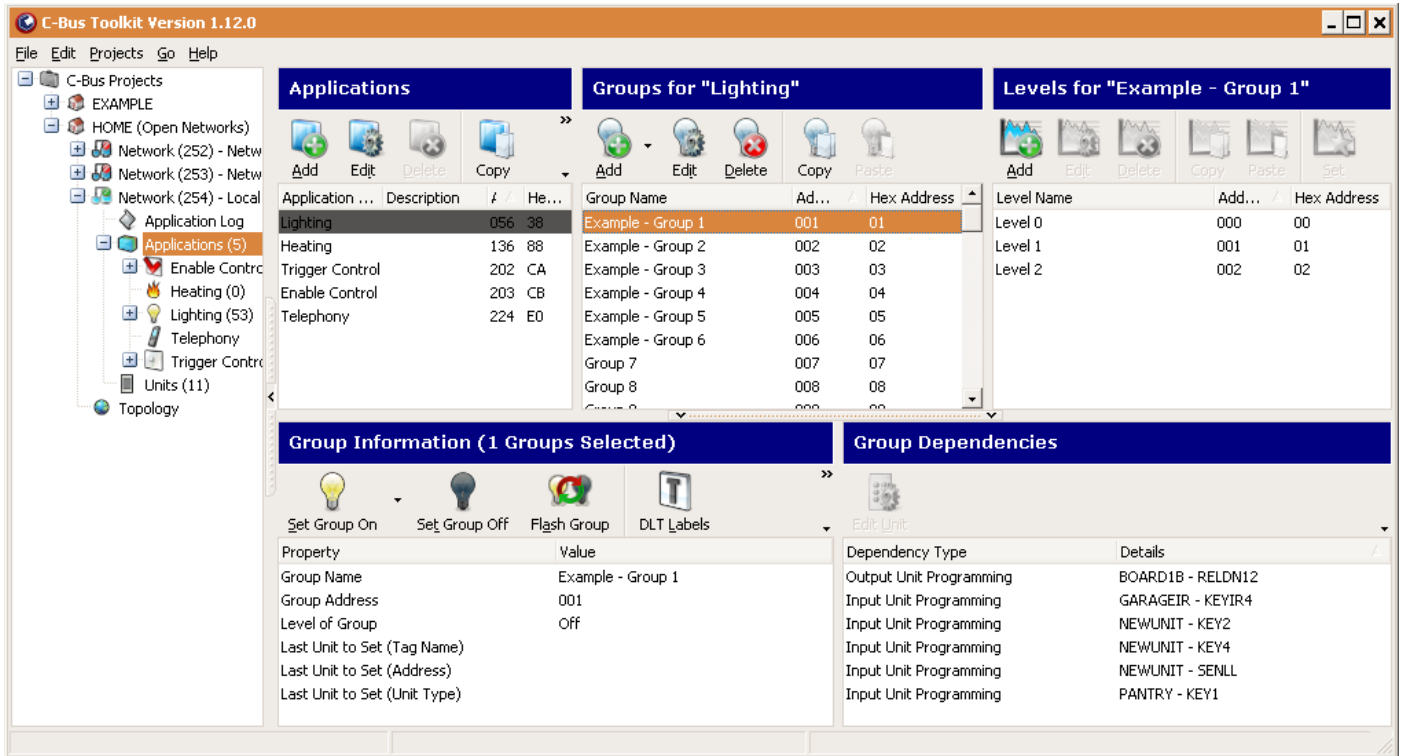
Additionally the moved units are indicated in a bold font in the Network View.

Unit Type	Serial No.	Address	Part Name	Exists in Database	Prim Application
BRIDGE2N - DIN Rail Network Bridge (...)	001004500307	253	BRIDGE	Yes	All Applications
DIMDN8 - DIN Rail 8 Channel Dimmer, ...	000692600009	007	BOARD1A	Yes	Unused
KEY1 - 1 Gang Key Input Unit	000689280124	003	PANTRY	Yes	Lighting
<b>KEY2 - 2 Gang Key Input Unit</b>	<b>000684260048</b>	<b>005</b>	<b>NEWUNITA</b>	<b>Serial Number Only</b>	<b>Lighting</b>
KEY4 - 4 Gang Key Input Unit	000689930003	006	KEY4	Yes	Lighting
<b>KEYIR4 - 4 Gang and 4 Channel Infr</b>	<b>000673150030</b>	<b>021</b>	<b>GARAGEIR</b>	<b>Yes</b>	<b>Lighting</b>
KEYSCEN4 - 4 Gang Scene Controller	No serial #	009	THEATRE	Unit Type Only - Se...	Lighting
PC_LOCAL - DIN Rail PC Interface	000691020014	002	PCI	Yes	N/A
RELDN12 - DIN Rail 12 Channel Voltag...	000687420214	240	BOARD1B	Yes	Lighting
SENLL - Light Level Sensor	No serial #	004	PORCH1	No	Lighting



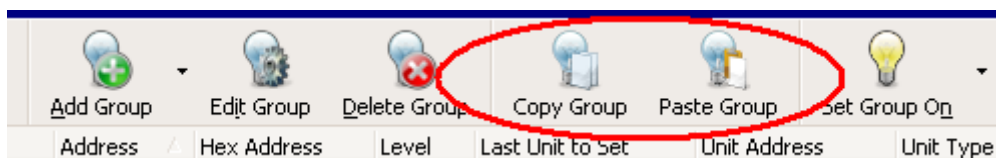
## APPLICATIONS PANEL

On the Applications node Toolkit now has a single consolidated panel showing Applications, Groups, Levels and Group Dependencies. This provides an alternative to working with the treeview beneath this node. All the same properties and operations from the treeview are available in this single panel.



## COPY & PASTE

Toolkit now supports standard Copy & Paste (and Drag and Drop) operations and the Ctrl-C, Ctrl-V keyboard shortcuts. These operations are supported for projects, networks, applications, units, enable network variables, network variable values, trigger groups and action selectors.



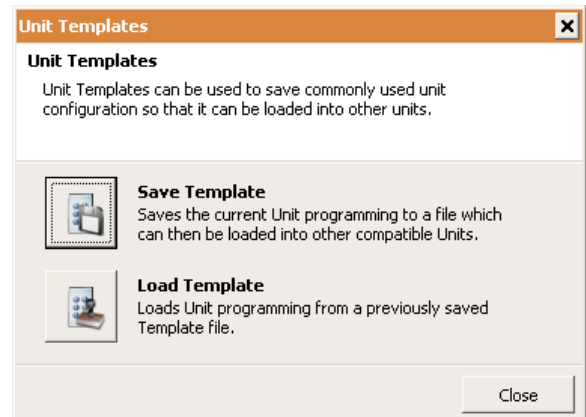
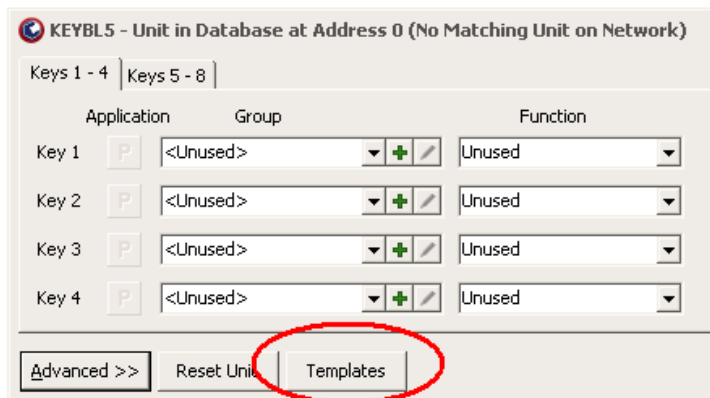
For example you can select multiple groups and drag them into another Application, or copy an entire Application and its Groups from one network to another.

Please note that the dedicated 'Copy Tags' button has been removed as it is no longer needed.

---

## UNIT TEMPLATES

When in a Unit Dialog, the unit's configuration can be saved to a Unit Template, which is an XML file on your local filesystem. This configuration can be later loaded onto another (compatible) unit dialog.



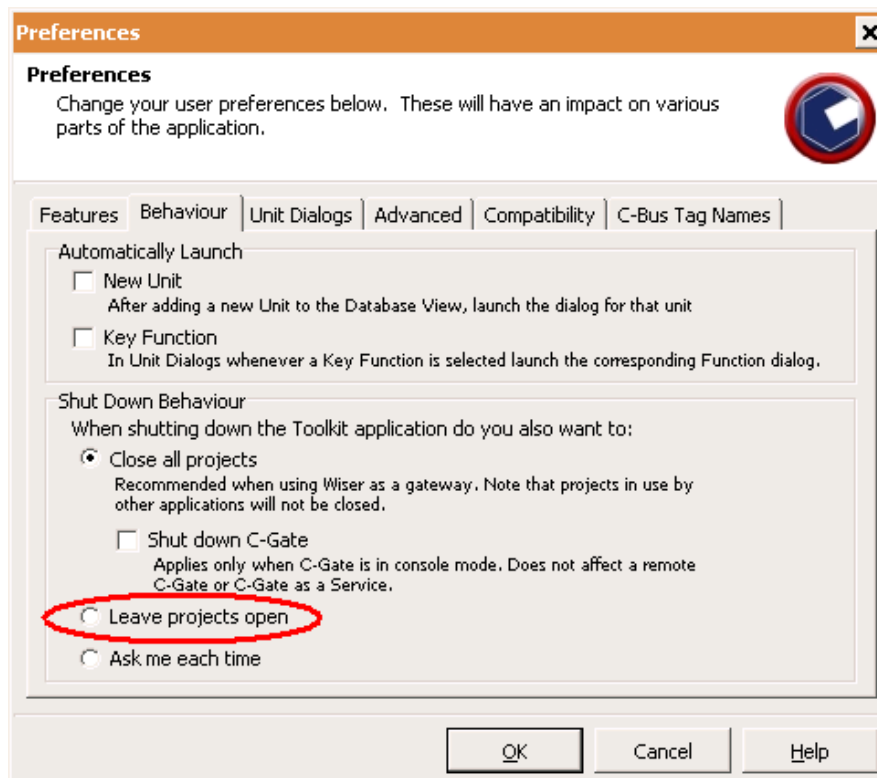
The Unit Templates feature allows a user to:

- maintain a library of frequently-used configurations.
- share unit configurations with the C-Bus community.
- supply unit configurations to a support provider for diagnosis.

---

## SMARTER SHUTDOWN

Toolkit has new shutdown options. By default, Toolkit on shutdown will now close any projects not being used by other applications. To restore the previous default behaviour of not closing any projects at all on shutdown you need to select the option "Leave projects open" in Preferences.



---

## CONCURRENT USE OF CLIPSAL SOFTWARE APPLICATIONS

Toolkit can now be used at the same time as other applications such as Schedule Plus and PICED. This is due to two underlying changes:

- a) Toolkit no longer needs to stop the automatic sync of a C-Bus network that it connects to.
- b) Smarter Shutdown options ensure that projects in use by another application are left running.

---

## C-GATE CONFIGURATION OPTIONS

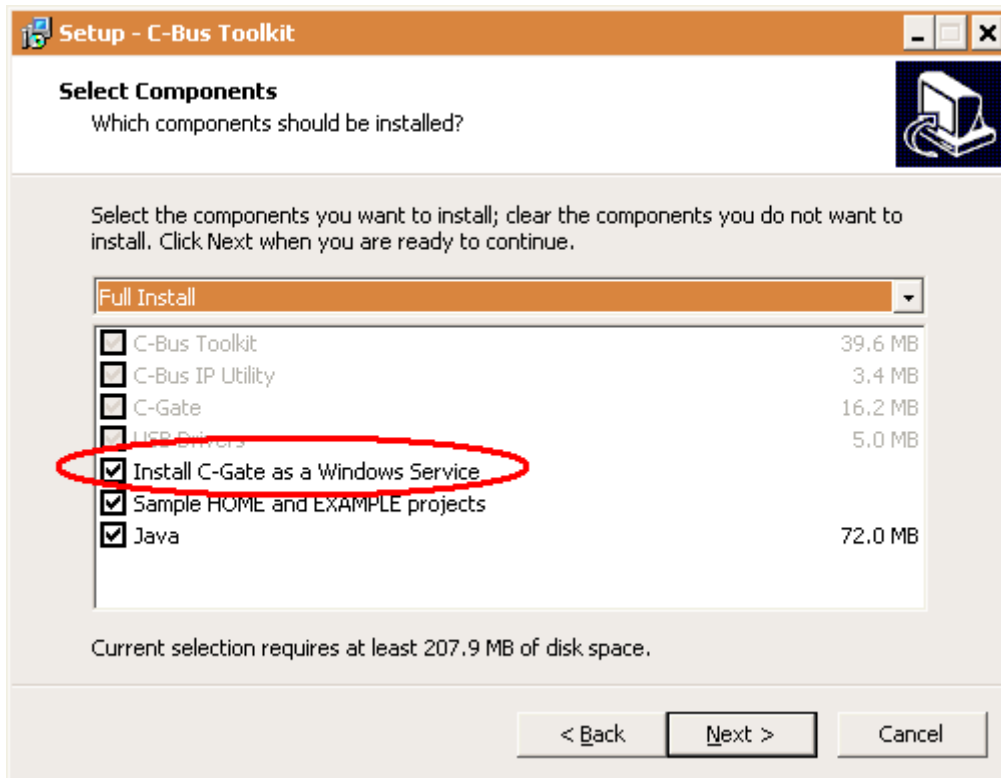
C-Gate Configuration dialogs have been added at the Global, Project and Network nodes.



These dialogs allow you to configure some common options that were previously only available in the global C-GateConfig.txt file. These options are now saved in your project file so that they are not lost when moving the file to a different machine. Furthermore you can specify different values for individual networks. This allows you to tailor the C-Gate configuration exactly to the needs of a given site.

## C-GATE SERVICE

C-Gate will now be installed as a Windows Service. The *Install C-Gate as a Windows Service* component is selected by default in the installer.



The C-Gate service will automatically start after installation and each time the computer is rebooted.

Please note that the C-Gate console window will no longer be visible. To initiate a C-Gate command session you can navigate to *Start Menu > Clipsal > C-Gate* and select the *Connect to C-Gate* option.

If you wish to revert to the traditional C-Gate console window, unselect the *Install C-Gate as a Windows Service* component in the Toolkit installer. In this mode, C-Gate will be launched (and sometimes shut down) as needed by Clipsal Applications in the same manner as in earlier versions of the software.

You may change between the two modes of operation at any time by re-running the installer again.

## DID YOU KNOW..?

Some lesser-known features have been available in C-Bus Toolkit for a while. This section highlights a few of them.

- Automatically Open Projects
- Copy Comma Separated Values
- Report a Problem
- Hide Buttons and Columns
- Desynchronise View Filters

---

### AUTOMATICALLY OPEN PROJECTS

Toolkit has command-line parameters to automatically open a particular project and network on startup. For example, the following will start Toolkit, open project TEST3 and select the Units node of network "local":

```
CBusToolkit.exe /PROJECT=TEST3 /NETWORK=local
```

---

### COPY COMMA SEPARATED VALUES

You can easily copy a list of applications, groups, levels or units from Toolkit. To do this, select all or individual items in a Toolkit list view and press **Ctrl+Insert**. The contents of the clipboard will be in a .csv format that can be pasted into a spreadsheet.

	A	B	C	D	E
1	Unit Type	Serial No.	Address	Part Name	Tag Name
2	PC_INT_1 - PC Interface	No serial #		2 PCI01	NEWUNIT
3	PCLOCALU - DIN Rail USB PC Interface	1004113065		3 NEWUNIT	NEWUNIT
4	KEYM4 - 4 Gang NEO Key Input Unit	1000313543		4 NEWUNIT	NEWUNIT
5	RELDN12 - DIN Rail 12 Channel Voltage Free Relay 1	655050009		6 NEWUNIT	NEWUNIT

---

### REPORT A PROBLEM

You may know that Toolkit prompts you to send us an e-mail when there is an unexpected exception. But you can also send us an e-mail about other problems that are not exceptions. After you experience the problem go immediately to the *Help* menu and select *Report a Problem*. This will send us an e-mail with your description and some recent logs.

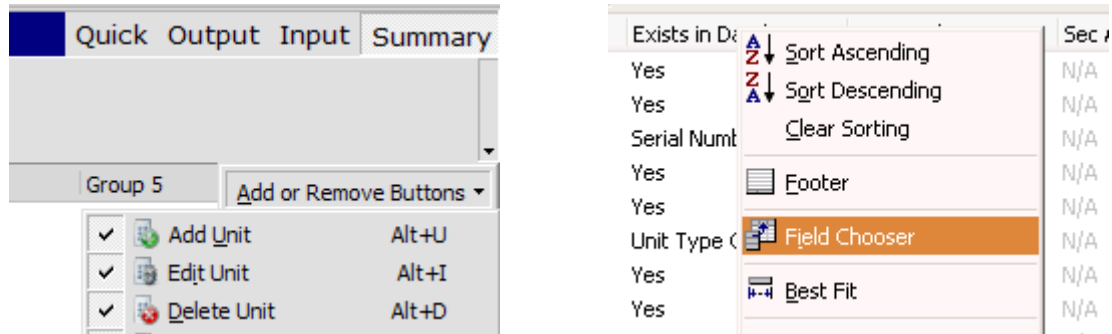
---

## HIDE BUTTONS AND COLUMNS

Unwanted buttons and columns can be removed from the Toolkit views.

To manage the visible buttons click the small down arrow button on the far right of the toolbar, select the *Add or Remove Buttons* option and untick any buttons you wish to hide.

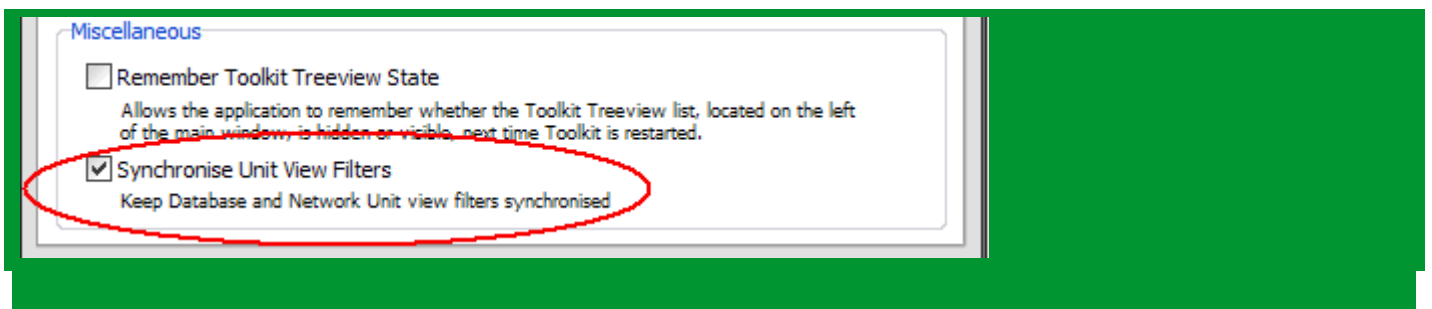
To manage the visible columns right-click on any column header and select the *Field Chooser* menu item. This will present a box (initially empty) to which you can drag and drop selected column headers that you no longer wish to see.



---

## DESYNCHRONISE VIEW FILTERS

By default Toolkit locks the database and network view filters. To have different filters, for example *All Units* in the database view and *Output Units* in the network view, you must first de-synchronise them in Toolkit Preferences:



## TOOLKIT 1.12.0

0011108 [About Box] Display Java version on the About dialog  
0013076 [Add Unit dialog] Add unit dialog usability improvements  
0015151 [Add Unit dialog] Add unit dialog can appear on the wrong screen in multi-monitor set-ups  
0021557 [Add Unit dialog] Ctrl+V shortcut doesn't work in Add Unit dialog / Serial number field  
0018354 [Bar Code Scanner] serial number for power supply not able to be inserted into the toolkit database.  
0015380 [Browser : Application Log] Error reports displayed on Application Log contain some information that's not useful.  
0018212 [Browser : Application Log] Add Multi-room Audio Application Message Handling to Application Log...  
0019691 [Browser : Application Log] Exception raised while scenes play-out in the application log with Occupancy GUI open  
0011399 [Browser : Physical Units View] Readdressing Relays/Dimmers on address 1 with burden can bring down the network.  
0011702 [Browser : Physical Units View] When transferring DB to Network, copy the unit's serial number back to the database  
0013269 [Browser : Physical Units View] Re-Address unit to Match Database lists other PCIs when applied to a PC\_WHAM  
0013348 [Browser : Physical Units View] Suggest adding an automatic assignment of unit addresses option  
0016079 [Browser : Physical Units View] unexpected options in units bar menu 'customise'  
0004026 [Browser : Treeview] Dependency Type Missing  
0014145 [Browser : Treeview] Copy Tags 2.0  
0004735 [C-Gate Connection] Telephone interface errors are not presented to the user  
0007448 [C-Gate Connection] Catalog : reference "IsInternal" not "IsReleased"  
0014954 [C-Gate Connection] close cgate while GUI open does not do enough... can get exceptions if you continue  
0019201 [C-Gate Connection] Toolkit changes to support C-Gate as a service  
0019344 [C-Gate Connection] Exception occur after closing c-gate before toolkit finish opening  
0019634 [C-Gate Connection] Exception thrown if C-Gate is closed while opening a network  
0019635 [C-Gate Connection] Commands can take a long time to timeout even if the connection to C-Gate is lost  
0020377 [C-Gate Connection] Stop turning off autosync  
0021031 [DB View] Changing Database unit Filters reloads data when not appropriate to do so.  
0015171 [DLT Labels Dialog] Exception when selecting project when running Toolkit on Chinese variant of Windows XP  
0007613 [General] Toolkit does not start-up in the same location it was closed from when using dual monitors  
0007846 [General] The tag name is being saved to the DB when electing to save to the network only  
0009044 [General] Any Application Learn Behaviour  
0009497 [General] Copy Tags does not copy tags for applications  
0010960 [General] Parent Issue - Explorer Manager Rewrite Issues  
0011431 [General] Unable to transfer from Network to Database for Input Units, DALI and Arch Dimmer 6 Networks deep  
0011432 [General] Toolkit Permits the Creation of a Network topology outside of the capabilities of C-Bus.  
0012503 [General] Record Last Updated Tag in the project file  
0012708 [General] "Dimmer Down" Macro Function Wrong?  
0012850 [General] Application Log stops at 50,000 lines and cannot be restarted without restarting Toolkit.  
0013681 [General] Transfer All functionality can be presented in a better way  
0014315 [General] Incorrect error message for Serial Number field.  
0014572 [General] Exception when opening a CNI on a PC with no COM ports  
0014725 [General] Large Network Stability  
0014733 [General] Gecko Features Pri 3: Drag / Drop or Copy / Paste  
0014990 [General] Copy Tags popup menu actions suss  
0015054 [General] Modify "Add all wired/wireless units" buttons to only enable when registry hack exists  
0015191 [General] Copy/Paste of networks, applications, groups, levels and units  
0016745 [General] Network Scan fails if temperature broadcast event appears on the network during scan  
0018231 [General] User not prevented from initiating a transfer to database when unit is being edited  
0018553 [General] Using New Unravel Feature the Network Scanning Dialog appears above all items for a long period  
0018598 [General] Toolkit CPU Usage goes to 100% when measurement application message is sent from Devkit.  
0019111 [General] New Way of Managing Applications/Groups/Levels...  
0019206 [General] When pressing the update button it ask to do a scan first.  
0019599 [General] Update C-Bus USB Driver to the version 6.00  
0019628 [General] Close All Networks fails to work for any projects that have not been clicked on  
0019750 [General] Project XML Schema Update...  
0020459 [General] silabser.sys causes blue screen  
0020478 [General] Can create groups in applications where CanAddGroups == false  
0020551 [General] TKH-COP-01 to 06  
0020691 [General] Unit - CLK2 (5031H2TC7) - Text presentation issue  
0020713 [General] DINAUX4 Help not linked to Toolkit GUI Help button  
0020736 [General] Context sensitive link for WTXU unit Help

0020889 [General] DSI Power Status  
0021061 [General] Find Networks Dialog - mashing of Scan button queues up scans  
0022258 [General] Shall the default C-Gate memory allocation be increased?  
0022357 [General] Problems re-installing Sensor UNits  
0011505 [General Exceptions] Unable to delete corrupt project from Toolkit  
0013391 [General Exceptions] Exception when running Toolkit on a PC that possibly has not been rebooted for a long time  
0015871 [General Exceptions] Improvement of delayed send of error reports  
0017477 [General Exceptions] Exception ECGateCommand 'Unable to save project' when transferring unit to Network  
0017547 [General Exceptions] Exception when making a network after deleting that network.  
0018385 [General Exceptions] Exception after selecting Fan controllers in Global Programming.  
0018590 [General Exceptions] Exception when breaking connection from local network to bridges during scan of local network.  
0019800 [General Exceptions] Make Grid and Data Querying and Editing More Robust...  
0019991 [General Exceptions] Produce useful error information when a stack overflow occurs  
0020732 [General Exceptions] Exception when repair the project  
0020826 [General Exceptions] Exception occur when add multiple group on the lighting application while DIMAR12 gui is open  
0021048 [General Exceptions] Exception 'EPrivilege' in module CBusToolkit.exe at 0002F062 Privileged instruction  
0021234 [General Exceptions] Exception occur when trying to cancel a network scan  
0021850 [General Exceptions] Exception using Find C-Bus Networks when Project Upgrade required  
0021997 [General Exceptions] Error appears claiming that there is no drive inserted in D drive  
0022286 [General Exceptions] Exception occur when try to readdress unit when there are two units with the same unit address  
0012492 [Global Programming] Suggest a Global Programming - Apply to Network and/or database dialogue when clicking OK  
0013328 [Global Programming] Bulk Input Unit LED colour change sorting by Apply has unexpected behaviour  
0013540 [Global Programming] When changing LED colour globally, there is no option to select dual LED or all off.  
0018837 [Global Programming] Exception in Global programming Unit Primary Application Transfer  
0018909 [Global Programming] Wizard to clear programming on the selection of units  
0019625 [Global Programming] Rework Global Programming Wizards  
0019990 [Global Programming] Add Set "Fail Safe" Time for shutters in the Globals  
0020202 [Global Programming] Set LED Off colour using Global Programming  
0020560 [Global Programming] TKH-GLO-01 - Global Programming Rework  
0020561 [Global Programming] TKH-GLO-02A New Global Programming Wizard shall be created to reset units to default.  
0020272 [Help Files] Crash when exiting help after search  
0015160 [Installer] No warning if Java fails to install due to insufficient disk space when installing full TK  
0021738 [Installer] A Clean install on Winsows 7 64bit fails to install the USB drivers  
0023229 [Installer] Option to reset (delete) the pre-existing config file  
0009610 [Network Manager] Copy tags does not allow copy between projects  
0016768 [Network Manager] When Making Network using a gateway the confirmation message refers to a bridge.  
0019237 [Network Manager] Edit Network dialog : Port selection needs to be user-editable  
0019786 [Network Manager] Unable to edit network type for "Bridge-Wireless" Network.  
0019996 [Network Manager] Can not add networks if PC has no COM port  
0020535 [Network Scanning] TKH-SCN-06 - A progress bar shall be added to the Status Bar to indicate the scan progress.  
0011240 [Network View] Copy and cloning  
0016335 [Network View] Network Voltage ping does not update voltage reading on subsequent pings  
0018847 [Network View] New option: "Scan Selected"  
0021439 [Network View] Implement C-Gate Config dialog on Project and Network nodes  
0015602 [Preferences] Merge the sort and group display preferences pages  
0018883 [Project Restore/Backup] Toolkit shuts down if it loses connection with a remote cgate during a project backup.  
0014945 [Scene Manager Dialog] Pasting a scene doesn't work properly if a different application is selected  
0007616 [Topology/Network Properties] Network name in the topology editor is truncated  
0015539 [Topology/Network Properties] Topology doesn't show last part of CNI's IP address  
0015618 [Topology/Network Properties] Networks that bridge to a few other networks have flaws when displayed as topology  
0019815 [Unit : Bridge] Adding wireless gateway - near side address is not populated  
0009754 [Unit : DALI (PCDAL2B)] DALI networks are referred to a A and B, but terminals are labelled 1 and 2  
0014966 [Unit : DIMARx] Unit Identification tab should have a line drawing of the unit  
0009301 [Unit : DLT] Review the use of Trigger Control application on DLT units  
0016856 [Unit : DLT] Join mode settings not being automatically configured correctly when using the Enable Control application  
0020716 [Unit : DLT] Exception ECGateFileNotFound when opening DLT unit GUI  
0021362 [Unit : DLT] Dynamic Icon Gui focus problem  
0021509 [Unit : DLT] Exception on DLT Environment tab  
0019879 [Unit : Key4, IR, BC, AUX] Adding new group does not change key function to On/Off  
0019882 [Unit : Key4, IR, BC, AUX] Scenes not grayed out in KEYCIR1/4 units  
0008511 [Unit : Neo, Saturn, Reflection] After Primary Application gets changed scene commands still remain on old Application  
0012212 [Unit : Neo, Saturn, Reflection] Support DIMMER+TIMER in key units  
0013143 [Unit : Neo, Saturn, Reflection] "Unit has learned" checkbox is inconsistent.



0013147 [Unit : Neo, Saturn, Reflection] Learn Flags need better labels/controls  
0013560 [Unit : Neo, Saturn, Reflection] Learn Options are not working correctly  
0021981 [Unit : Occupancy Controller (IOPEX)] "On Key" is not selecting when setting "The timer is set by" is set to "Block 1"  
0019946 [Unit : PC\_GIM] Saving changes not saving Library Curves  
0019824 [Unit : Relay : Surface Mounting] RELSM8 Status tab incorrectly shows Restrike Timing indicator  
0018874 [Unit : RELDF1] Add Unit Checking Functionality When Transferring From DB/Network or Vice-versa...  
0010150 [Unit : SENPILL] Margin slider can go all the way to 0% but unit always has a +/-10 lux margin  
0011258 [Unit : SENPILL] Multisensor with scenarios  
0016769 [Unit : SENPILL] Add ability to choose a group for LL Maintenance on LL tab  
0021975 [Unit : SENPILL] Add PIR firmware 2.4.00 to cbusunits.xml  
0022311 [Unit : SENPILL] Reset unit function makes ligh tlevel maintenance enable with selecting Active check box  
0008602 [Unit : SENPIR] Poor identification for the various PIR Categories in Database  
0018347 [Unit : SENPIR] ST7 Disable Indicator checkbox misaligned on Blocks tab  
0020437 [Unit : SENPIR] Exception validating ST7 SENPIR programming  
0022111 [Unit : SENPIR] Exception occur when changing keys in blocks tab  
0022247 [Unit : SENPIR] Set default for new firmware does not reset to correct Any motion key function  
0022388 [Unit : SENPIR] Toolkit needs to change the time threshold  
0015527 [Unit : SENTEMPB] Status collection never recovers if there is a communication error with the unit  
0021731 [Unit : Thermostats] Ventilation setting is not persisted after GUI reopen  
0007862 [Unit : Wireless Gateway] Refresh required automatically when adding wireless network  
0020483 [Unit : Wireless Gateway] Access violation in Wireless gateway in switch mode  
0020649 [Unit : Wireless Gateway] Exception Error Occurs when opening a USA Wireless Gateway  
0021456 [Unit : Wireless Gateway] USA Wireless - Units not staying readdressed after a Network Scan.  
0008256 [Unit : Wireless Input] In simple view the application status isnt updating correctly.  
0009446 [Unit : Wireless Input] Wireless Units - Key Functions list not consistent for all functions  
0017667 [Unit : Wireless Input] Have to wait 33 sec after clicking to view a wireless unit before anything happens.  
0018671 [Unit : Wireless Input] After adding a new group to a key the key feild is displayed with  
0019787 [Unit : Wireless Input] Setting Key Function to Scene Set does not change 'Group combo' to 'Scene combo'  
0020631 [Unit : Wireless Input] TK does not display the secondary Application for wireless fan controller when loading the gui  
0021289 [Unit : Wireless Input] 0 Gang Neo/Saturn Decorator - Retrofit has 2 default releases instead of 1  
0021445 [Unit : Wireless Input] USA Wireless - When swapping unit addresses on the network, it causes an error message.  
0011803 [Unit Catalog] cbusunits.xml redesign for multiple firmwares  
0019780 [Unit Catalog] Multiple unit add to database is tedious when firmware version number changes are required  
0020193 [Unit Catalog] Use different class for CTB v5.1.00 units  
0019606 [Unit Conversion process] Reinstall does not convert DB unit with firmware different from network unit  
0008782 [Unit Dialog] Remote override and local toggle information missing from the status tab of the ANODN4 unit  
0020047 [Unit Dialog] HVAC thermostat unit cool/heat group dialogue sits on top of other programs  
0020809 [Unit Dialog] Exception reported - transferring network to database - KEYEx  
0007355 [Unit Dialog (general)] possible radio button format and/or caption change for Learn mode options  
0009445 [Unit Dialog (general)] Unit Dialog - Key Functions grid/list navigation not consistent.  
0009556 [Unit Dialog (general)] Pressing F1 in some Unit Dialogs expands drop-down lists  
0010613 [Unit Dialog (general)] I suggest 'Convert Unit...' button, to convert database units to similar types.  
0013426 [Unit Dialog (general)] Add a "Mounting Orientation" field to database units  
0013427 [Unit Dialog (general)] Add numbers and rotation to unit graphics  
0014181 [Unit Dialog (general)] Tool Tips are not updating correctly when mouse hovers to different buttons in UI  
0016870 [Unit Dialog (general)] Toolkit incorrectly programming scene modify timer micro-function blocks  
0018856 [Unit Dialog (general)] Single giant dialog to configure all Key Groups and Macrofunctions  
0020479 [Unit Dialog (general)] Scenes are not deleted when changing Primary Application to another Application  
0020539 [Unit Dialog (general)] Allow the user to immediately open a Physical Unit not marked as a duplicate unit address.  
0020633 [Unit Dialog (general)] Hotkeys do not work for toolbar buttons that are hidden  
0020792 [Unit Dialog (general)] Dimmer Function dialog has no content on Windows 7

---

## C-GATE 2.9.0

0004895 [Commands] PROJECT LOAD must check database version  
0007447 [Unit Catalog Schema] change firmware revision model property from "IsReleased" to "IsInternal"  
0010227 [Network Bridges] Cannot save PC\_GIM via bridge  
0011012 [Database Schema] Need to store the unit's firmware version in database  
0011369 [Help (External)] HVAC commands in C-Gate need to be documented  
0012614 [Parent Issues] Support all operations without a project context  
0012615 [Parent Issues] NET LIST, LOAD and SAVE commands need a project parameter  
0012616 [Parent Issues] NET commands don't support a project prefix in their network parameter

0013657 [Commands] "net close //" command doesn't get a response  
0014209 [Config] Commandline option to set C-Gate into Server Mode  
0014426 [Cgate.exe and Service] Multiple cgate installations cgate.exe should launch local cgate.jar as priority  
0014912 [General] Java changes to support C-Gate as a service  
0015480 [Events] ERROR MESSAGE with 15 header reports wrong severity  
0015543 [C-Gate Connection] Closing serial network connection doesn't disconnect properly according to c-gate "port list"  
0016077 [Database Schema] Need to store unit status in the database  
0017798 [Help (External)] Help for new command DBCREATENET  
0018039 [Commands] DBGET does not support asterix wildcard  
0018040 [Commands] DBGET array results do not contain index  
0018057 [Events] Need more information about network errors  
0018199 [Installer] Java install silently fails when there isn't enough space  
0018407 [Network Unravel] New unravel not unravelling units at 255  
0018554 [Network Unravel] Bridges are being moved During a Scan and Unravel and are not being moved back  
0018631 [Unit : PC\_GIM] GIM Firmware version always reports as {unknown}  
0018799 [Network Unravel] new unravel needs to move a BRIDGE2F to the correct address  
0018812 [Network Sync] Background sync continues even while PCI connection is broken  
0018850 [Network Unravel] Support UNRAVEL on selected addresses  
0018875 [Network Unravel] PCI did not unravel to match database  
0019060 [API Versions] API versions for C-Gate  
0019096 [Units] New cgate class required for Ultrasonic (Occupancy) Sensor  
0019132 [Linux] Default HOME project fails to load on Linux  
0019160 [Network State] NET OPEN causes State=sync even with autosync=no  
0019171 [Config] Network-level config options  
0019173 [Database Schema] Add network-level config options to tag database schema  
0019177 [Database Schema] Support for client-created custom properties on database objects  
0019198 [Commands] NET CLOSE without a parameter causes exception  
0019311 [Units] Populate FirmwareVersion2 database property  
0019549 [Commands] DBGET/DBGETXML/DBSETXML don't seem to support requesting a level unless using OID  
0019639 [Network State] C-Gate not recovering from disconnected CNIs  
0019761 [Unit Schema] Tags on parameters in unit specs  
0019793 [Config] network.retries cannot be increased beyond 3  
0019969 [Database] Repair Project capability  
0020104 [Database Schema] Capture physical location of units in database  
0020108 [Commands] FILE command using project reference fails if tag database located outside C-Gate dir  
0020116 [Commands] Cannot do FILE UPLOAD to nonexistent directory  
0020125 [Network Unravel] New Unravel failing via CTB  
0020307 [Database Schema] Store channel and key properties in database  
0020634 [Events] Syncs produce "unit configuration changed" messages repeatedly  
0020680 [Network Unravel] Ability to unravel a single unit (new command NET UNRAVELUNIT)  
0020789 [C-Bus/C-Gate Communications] Not issuing Page Set command when changing wireless unit address  
0020848 [Communications] Include SerialIO SerialPort library in C-Gate  
0020855 [Commands] TreeXML command responses do not indicate if unit has duplicates  
0020864 [Units] Change OEM unit property FirmwareVersion to Version2  
0020914 [Commands] New command NET CHECKUNIT to find out if a single unit address has duplicate units  
0020920 [Commands] Tree command responses do not indicate if unit has duplicates  
0020956 [Commands] NET LIST command doesn't accept the project context parameter  
0021008 [Commands] Deprecate NET STATE\_INTERVAL command  
0021020 [Config] Config option to control PCI Check  
0021049 [General Exceptions] Exception when querying RELDN8 units  
0021099 [Log] Match up responses to commands in log files  
0021167 [Network Unravel] User needs to opt NOT to readdress bridges to near side addresses  
0021191 [Log] Add transaction information to log files  
0021192 [Refactoring] Implement a C-Bus Command Transaction concept  
0021314 [Unit : Wireless Gateway] Utilise new function to remove Unit Address from cache  
0021346 [General] Expose Enable Control group level  
0021367 [Config] New commands CONFIG OBGET and OBSET  
0021382 [Database] Increase DBVersion to 2.3  
0021383 [Config] Persist all project-level config options to the database  
0021460 [Config] New config option: network.error.units-failed  
0021461 [Config] New config option: network.error.units-failed-hysteresis  
0021562 [Database] File handle not closed after reading DBVersion of a project file  
0021583 [Config] PROJECT LOAD fails if the project contains unknown config properties

0021587 [Config] Reduce default C-Bus command timeout from 6000 to 5500 milliseconds.  
0021640 [Commands] RAMP command does not accept level as a percentage any more  
0021641 [Commands] RAMP ramp-time parameter should be optional  
0021669 [Network Unravel] Don't move units to addresses 0 and 1 during an unravel  
0021672 [Database] PROJECT COPY fails to detect existing project  
0021684 [API Versions] Increase C-Gate version to 2.9.0  
0021741 [Installer] Refactor Installer to use Components not Tasks  
0021777 [Network State] Phantom response on disconnected network puts network into OK state  
0021792 [Unit Sync] Place units into sync state before they are synced or psynced  
0021811 [Help (External)] Document projects object  
0021860 [Events] Repeated EVENTS command causes thread growth  
0021883 [Network Sync] Misleading message about v3 PCI during sync  
0021885 [C-Bus/C-Gate Communications] When a command transmission fails C-Gate seems to be stuck in limbo  
0021914 [General] Change references to company from Clipsal to "Schneider Electric (Australia) Pty Ltd"  
0021946 [Installer] Write default heap sizes to HKLM in registry  
0021947 [Installer] Write default heap sizes to HKCU in registry (take over from TK installer)  
0021970 [Installer] Installer is not replacing the existing cgate.exe with the new version  
0021980 [Installer] Include new usb driver v6.4 installer  
0022003 [Network Sync] Lots of timeouts from MRA units  
0022004 [Network Sync] Output serial numbers during early phase of sync  
0022023 [Network Unravel] C-Gate reporting duplicate unit incorrectly  
0022067 [Commands] Unit readdress must not report OK when a readdress was not successful  
0022136 [Database] TRANSFORM PROJECT crashes if src and dest versions are 2 or more versions apart  
0022139 [Commands] Erroneous space in "(object not found)" error message.  
0022165 [Commands] Cannot stop or close PORTPROBE1 project  
0022179 [Commands] Need a way to find out the next expected sync time of a network